

Samsung Medison, an affiliate of Samsung Electronics, is a global medical company founded in 1985. With a mission to bring health and well-being to people's lives, the company manufactures diagnostic ultrasound systems around the world across various medical fields. Samsung Medison commercialized the Live 3D technology in 2001 and since becoming part of Samsung Electronics in 2011, it is integrating IT, image processing, semiconductor and communication technologies into ultrasound devices for efficient and confident diagnosis.

CT-HM70A GI V2.0-FTW-150813-EN

\* S-Vision is not the name of a function, but is the name of Samsung's ultrasound imaging technology.

\* S-Vue is not the name of a function, but is the name of Samsung's advanced transducer technology.



Scan code or visit  
[www.samsungmedison.com/ultrasound/general-imaging/hm70a/](http://www.samsungmedison.com/ultrasound/general-imaging/hm70a/)  
to learn more

**SAMSUNG MEDISON CO., LTD.**

© 2015 Samsung Medison All Rights Reserved.  
Samsung Medison reserves the right to modify the design, packaging,  
specifications, and features shown herein, without prior notice or obligation.

# Mobile excellence

## Ultrasound system **HM70A with Plus**



**SAMSUNG**

# Deliver excellence wherever you go

Featuring advanced imaging technology incorporated in compact hardware, the HM70A with Plus is the right choice for physicians and sonographers who want to deliver excellence in patient care and clinical efficiency wherever they go. The HM70A with Plus helps make ultrasound exams and ultrasound-guided procedures more accurate and streamlined with its image performance and efficient, easy-to-use features. The HM70A with Plus' slim and compact design offers versatile portability and increases productivity.

Aug 2015



## Excellent image quality

High-quality images are critical for physicians using ultrasound in any clinical environment and are the key to accurate diagnoses. The HM70A with Plus integrates intelligent imaging technologies to fulfill a wide range of needs with excellent image quality.

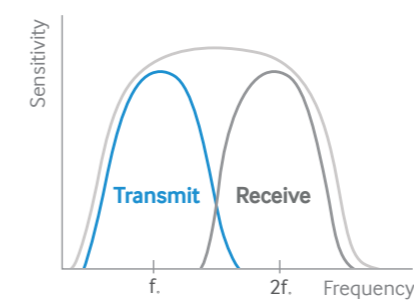
### Hybrid beamforming engine

A combination software and hardware imaging engine offers faster and more accurate data processing, which means more in-depth and detailed scanning.

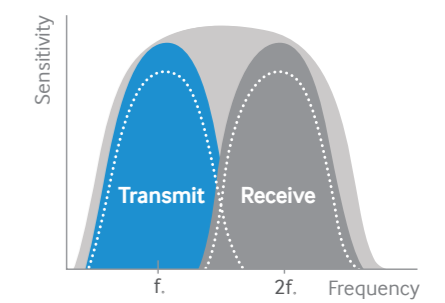


### S-Vue transducer (CA1-7AD, CV1-8AD)

The S-Vue transducer offers a larger bandwidth and higher sensitivity both in transmit and receive capabilities. The combination of the Hybrid beamforming engine with the S-Vue transducer allows easier visualization of difficult-to-image pathologies. Also, the ergonomically designed S-Vue transducer is easy to hold and manipulate.



Transmit/Receive at conventional transducer



Transmit/Receive at S-Vue transducer

# Excellent image quality

### 15-inch LED monitor

The monitor provides superior performance, delivering exquisite detail resolution for more accurate diagnosis.

### ClearVision™

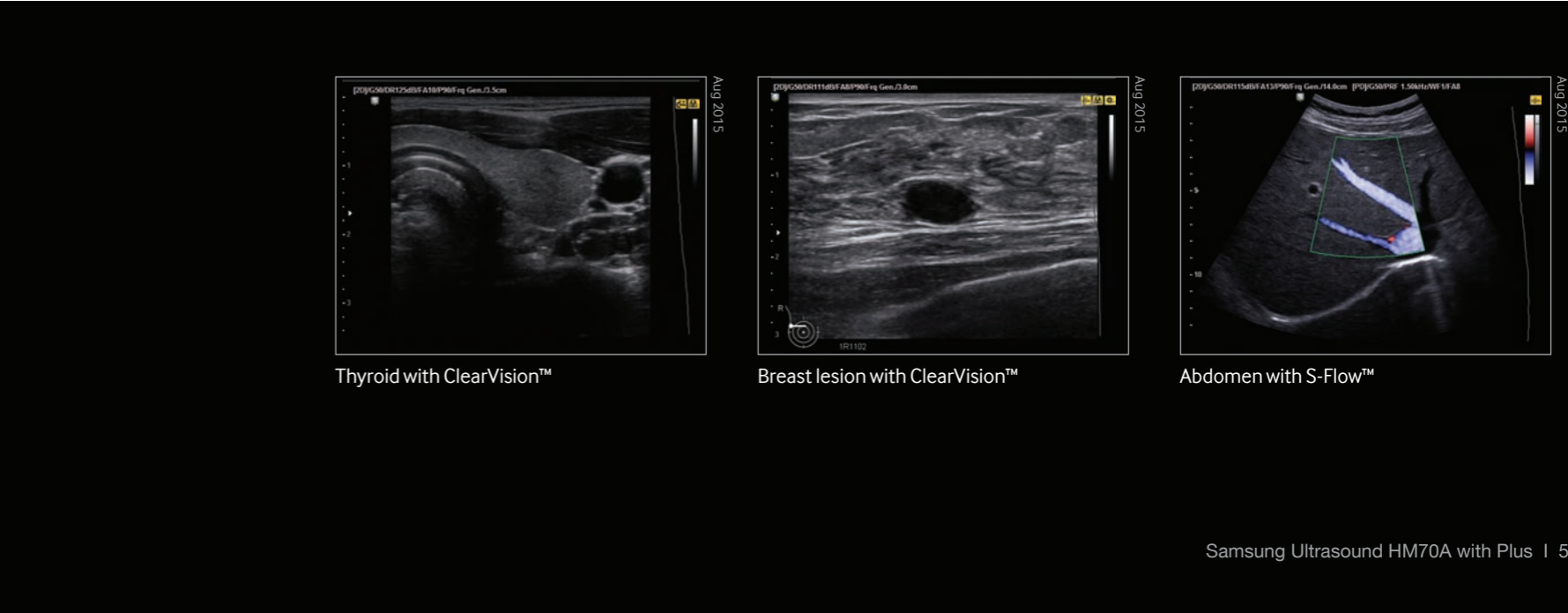
ClearVision™ virtually eliminates unwanted speckle noise, providing excellent contrast resolution with enhanced edge definition for unsurpassed image clarity.

### S-Flow™

S-Flow™ is a sensitive color Doppler that can reveal peripheral blood vessels even when blood flow detection is difficult.

### HDVI™

HDVI™ improves contrast resolution and reduces speckle noise in 3D reconstructed planes and rendered volume images. HDVI™ (high definition volume imaging) quickly renders outstanding images at the touch of a button.



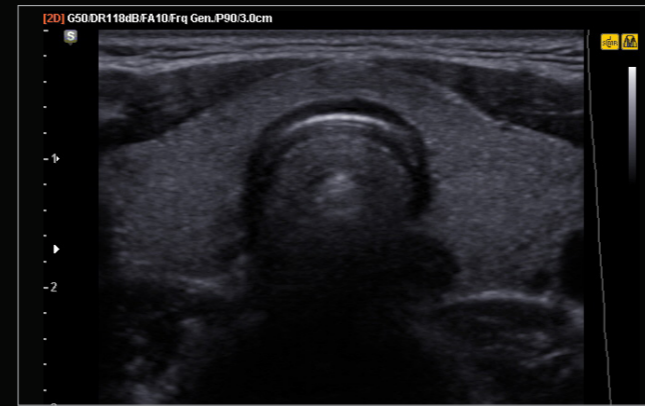
# Images rich in detail



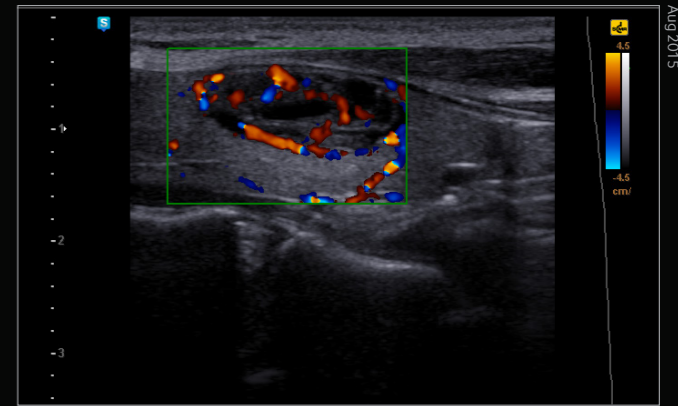
Aug 2015



Aug 2015



Aug 2015



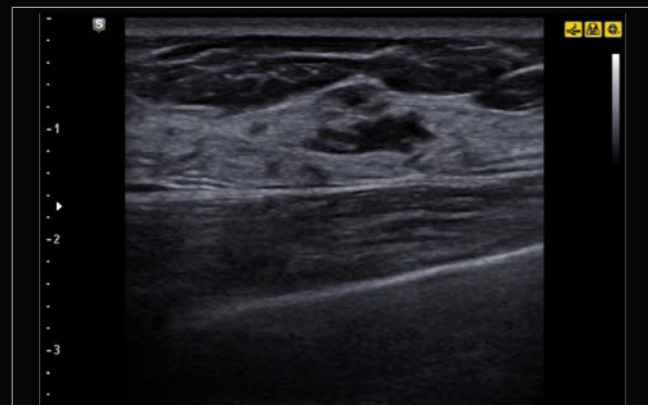
Aug 2015

Liver

GB stone

Thyroid

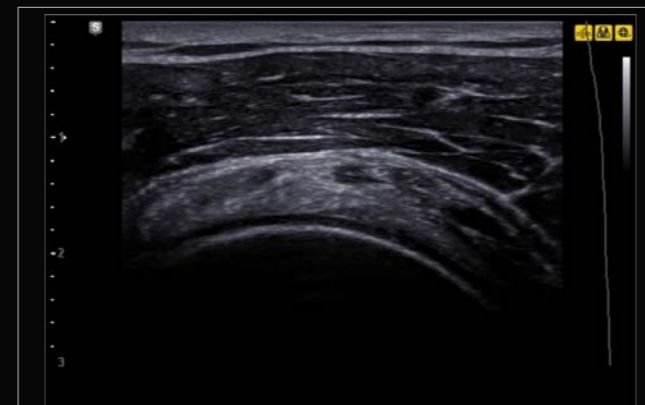
Thyroid nodule with color



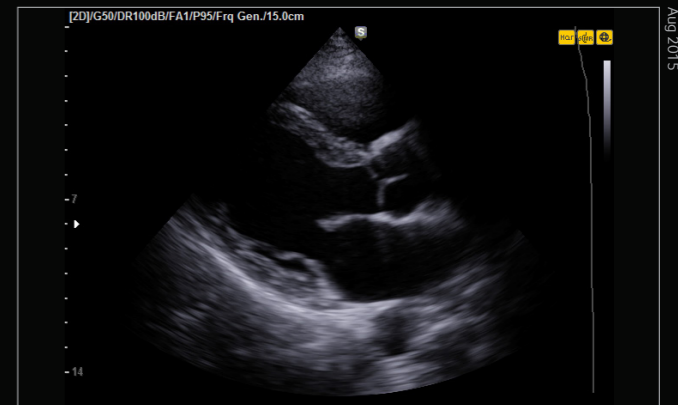
Aug 2015



Aug 2015



Aug 2015



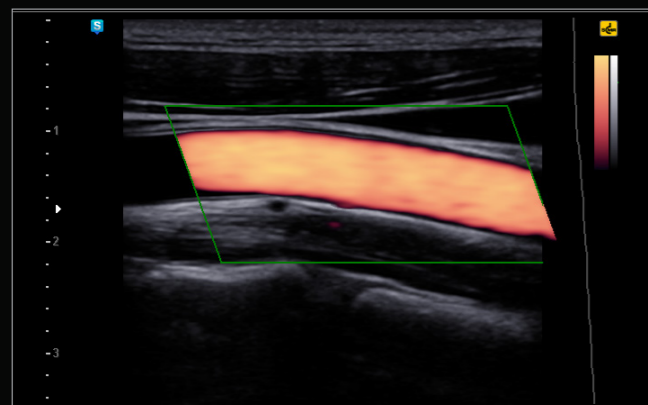
Aug 2015

Breast

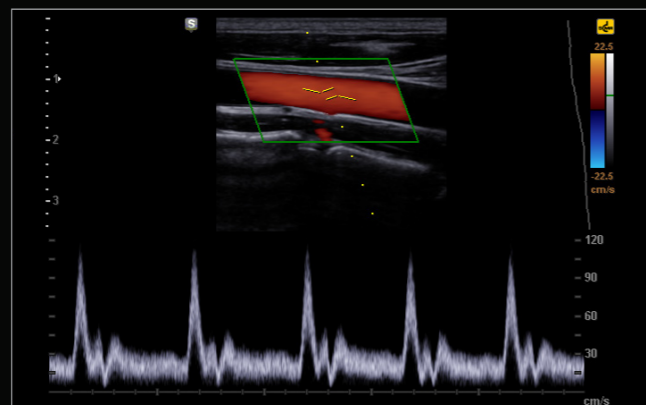
Carotid artery

Shoulder

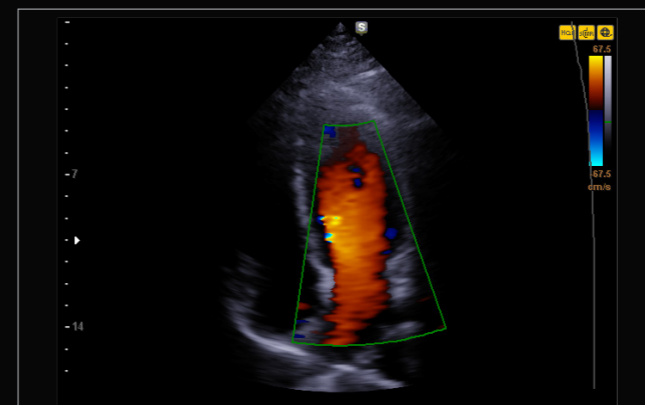
Cardiac



Aug 2015



AUG 2015



Aug 2015



Aug 2015

Carotid artery with power Doppler

Carotid artery with pulsed wave

Mitral valve with color

Mitral valve with continuous wave

## Excellent musculoskeletal solutions

### EZ Exam™

EZ Exam™ transforms multiple steps into a streamlined process at the touch of a button, reducing repetition.



Samsung is devoted to developing ultrasound technologies for thorough patient care. These advanced technologies are in the HM70A with Plus, a compact and smart system.

### Needle Mate™

With pinpoint precision, Needle Mate™ delineates needle location when performing interventions such as nerve blocks. Improved accuracy and efficiency in diagnosis are possible with beam steering added to Needle Mate™.

### ElastoScan™

A diagnostic ultrasound technique for imaging elasticity, ElastoScan™ detects the presence of a solid mass in tissues and converts the stiffness into color images. It verifies the presence of lesions, reducing the burden of further cervical palpation.

### Panoramic

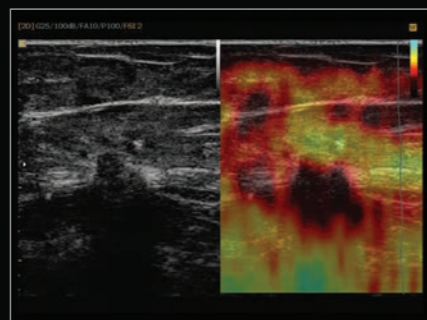
Panoramic imaging displays as an extended field-of-view so users can examine wide areas that do not fit into one image as a single image. Panoramic imaging also supports angular scanning from linear transducer data acquisition.

### QuickScan™

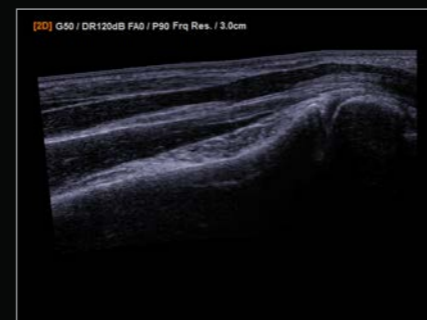
Important imaging parameters can be optimized with the touch of a button, maximizing workflow efficiency. In 2D imaging, QuickScan™ quickly optimizes brightness levels by adjusting the gain and TGC controls. In PW Spectral Doppler Mode, QuickScan™ easily optimizes the spectrum by adjusting the scale and baseline.



Needle Mate™



Breast lesion with ElastoScan™



Panoramic view of wrist

## Excellent cardiovascular solutions

With cardiac imaging performance and reporting tools, the HM70A with Plus helps physicians better focus on finding solutions to challenging cases while also maintaining optimal productivity.

### Strain

Strain is an assessment tool for global and segmental wall motion from three apical views and it shows peak longitudinal systolic strain in a bull's eye display.

- Comprehensive LV presentation
- Simultaneous chamber view with its segmental information
- Intuitive segmental strain values and time to peak

### Stress Echo

The Stress Echo package includes wall motion scoring and reporting. It includes exercise Stress Echo, pharmacologic Stress Echo, diastolic Stress Echo and free programmable Stress Echo.

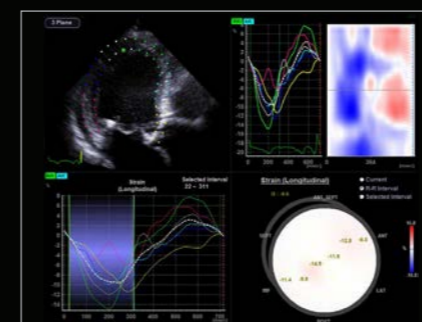
### Auto IMT™

Auto IMT™ allows fast measurement of the carotid artery intima-media thickness (IMT) for diagnosis of the patient's risks of stroke or heart attack. The simple operation helps enhance exam productivity and increase patient throughput.

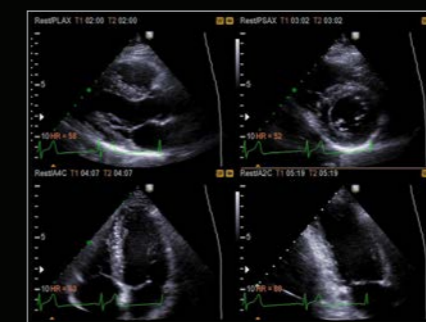


### Fast booting

SSD technology enables powering on in 60 seconds from the powered off state, and in approximately 14 seconds from the sleep mode. With the setup utility, users can program the system to wake upon opening the lid or pressing the power button.



Strain



Stress Echo



IMT measured with Auto IMT™

## Uncompromised comfort in use

The HM70A with Plus is exceptionally comfortable for users because it adapts to the varying needs of physicians and sonographers with outstanding ergonomics, mobility, and time-efficiency. In addition, Samsung's design principles give it a clean, slim appearance in the clinic.

### Full screen mode

With one touch, users can expand the image area to fit the entire screen, optimizing the view for image analysis. Users also can control various imaging parameters when in full screen mode.

### Backlit keyboard and control panel

Users can operate the HM70A with Plus even in low-lit areas.

### Front and rear handles

Users can transport the system on the optional cart or carry it by hand for easy mobility and effortless maneuverability.

### Compact and lightweight

The fully functional laptop-sized ultrasound system is slim and lightweight, at 6.1 kg (13.67 lb). Users can easily take the system to patient locations.



### Features of the optional cart and battery:

#### 1 Gas lift

Users can adjust the height of the system on the cart without straining their arms.

#### 2 On-cart power outlets

Users can utilize the power outlets on the cart without having to look for multiple outlets in the exam room.

#### 3 Extended transducer ports

Users can connect up to three transducers with the optional extended transducer ports on the optional cart, saving the time and labor spent on switching transducers. The three connected transducers can be used even during battery mode.

#### 4 Extended battery

Users can use the optional rechargeable battery for long-term operation. The battery supports 150 minutes of system operation when it is fully charged.

\* Above options may not be available for use in some countries.

# Versatile selection of transducers

## Curved array transducers



S-Vue transducer

### CA1-7AD

- Application : abdomen, obstetrics, gynecology, musculoskeletal
- Field of view : 70°

### C2-6

- Application : abdomen, obstetrics, gynecology
- Field of view : 57.5°

### SC1-6

- Application : abdomen, obstetrics, gynecology
- Field of view : 60.61°

### CF4-9

- Application : vascular, pediatric
- Field of view : 92°

## Endocavity transducer



### EVN4-9

- Application : obstetrics, gynecology, urology
- Field of view : 148°

## Linear array transducers



### L4-7

- Application : abdomen, musculoskeletal, small parts, vascular
- Field of view : 44.16mm

### LA3-16AD

- Application : small parts, vascular, musculoskeletal
- Field of view : 38.4mm

### L5-13

- Application : musculoskeletal, small parts, vascular
- Field of view : 38.4mm

### L7-16

- Application : musculoskeletal, small parts, vascular
- Field of view : 38.4mm

### LS6-15

- Application : musculoskeletal, intraoperative
- Field of view : 25.6mm

## Phased array transducers



### PE2-4

- Application : abdomen, cardiac, TCD
- Field of view : 90°

### P3-8

- Application : abdomen, cardiac
- Field of view : 90°

## Volume transducers



S-Vue transducer

### CV1-8AD

- Application : abdomen, obstetrics, gynecology
- Field of view : 72°

### V5-9

- Application : obstetrics, gynecology, urology
- Field of view : 150.6°

### VN4-8

- Application : abdomen, obstetrics, gynecology
- Field of view : 76°

## CW transducers



### DP2B

- Application : cardiac

### CW2.0

- Application : cardiac

### CW4.0

- Application : cardiac

### MMPT3-7

- Application : cardiac